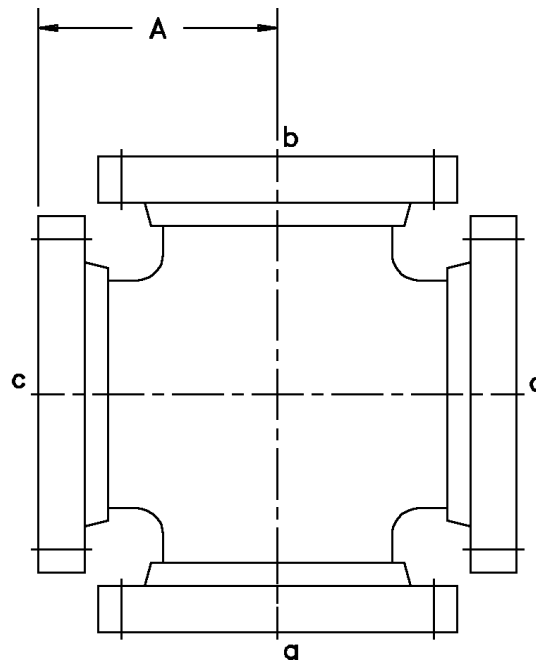




FIG. #72 - Cross, ANSI Flanged

| Size | "A" | Wt. |
|-------|------|-------|
| 1 | 3.5 | 4.0 |
| 1-1/2 | 4.0 | 6.5 |
| 2 | 4.5 | 11.0 |
| 2-1/2 | 5.0 | 17.0 |
| 3 | 5.5 | 19.0 |
| 4 | 6.5 | 26.0 |
| 6 | 8.0 | 42.0 |
| 8 | 9.0 | 73.0 |
| 10 | 11.0 | 105.0 |
| 12 | 12.0 | 156.0 |
| 14 | 14.0 | 182.0 |
| 16 | 15.0 | 210.0 |
| 18 | 16.5 | 234.0 |
| 20 | 18.0 | 286.0 |
| 24 | 22.0 | 380.0 |



Crosses 1" to 12" are rated for 150 psi.
 Crosses 14" and larger are rated for 100 psi.
 Higher pressure ratings are available.
 Bolt and gasket sets are available. Please see Fig. #101. Fittings meet the centerline to flange face dimension of ANSI B16.5, 150 lb.

NO RETURNS ALLOWED

FIG. #73 - Cross, Combination Coupled or Reducing

Crosses may be ordered with a combination of end types such as flanged, reducing flanged, bell, reducing bell and plain, or reducing plain ends.

When ordering Fig. #73 combination coupled, or combination coupled reducing crosses, please specify the end configuration by using the small letter call outs for each end.

Example:

12 x 10 x 12 x 6 combination-coupled reducing cross
 a = bell b = flange c = flange d = bell

NO RETURNS ALLOWED

