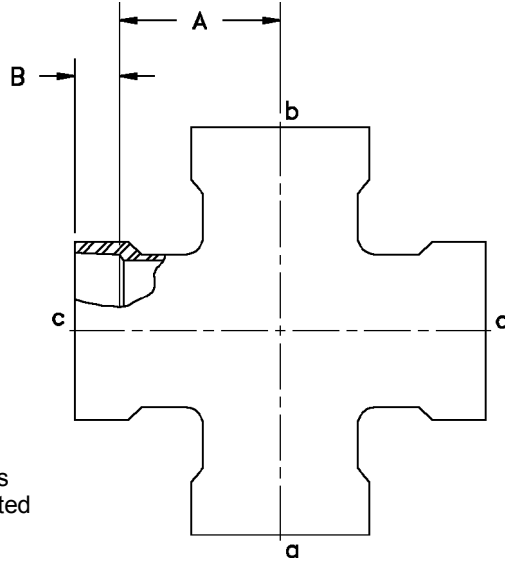




CROSSES

FIG. #70 - Cross, Bell-End

Size	"A"	"B"	Wt.
1	1.62	1.06	1.2
1-1/2	2.37	1.25	1.8
2	2.62	1.81	2.4
2-1/2	3.12	1.81	3.0
3	3.37	1.81	4.0
4	4.12	1.81	7.5
6	5.62	2.25	13.0
8	9.00	2.50	23.0
10	11.00	2.75	37.0
12	12.00	3.00	60.0
14	14.00	3.00	97.0
16	15.00	3.50	106.5

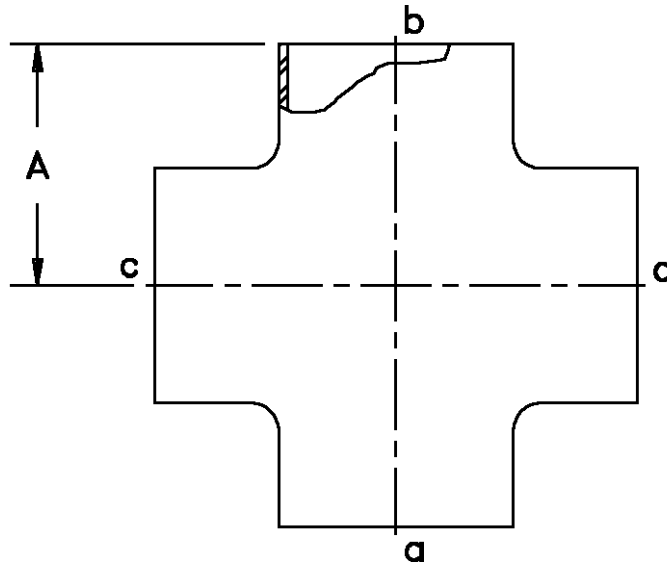


Larger fittings with bell ends available on request. Crosses 1/2" to 12" are rated for 150 psi. Crosses 14" & 16" are rated for 100 psi. Higher pressure ratings are available.

NO RETURNS ALLOWED

FIG. #71 - Cross, Plain End

Size	"A"	Wt.
3/4	2.38	0.9
1	3.38	1.3
1-1/2	3.88	2.0
2	4.38	2.7
2-1/2	4.88	3.7
3	5.38	4.6
4	6.38	8.0
6	7.88	13.3
8	8.88	22.6
10	10.88	35.9
12	11.88	58.5
14	13.75	61.2
16	14.75	66.5
18	16.25	78.5
20	17.75	93.1
24	21.75	113.0



Plain end fittings are designed for butt and wrap joining. Butt and wrap kits are available, see Fig. #90. Crosses 1/2" to 12" are rated for 150 psi. Crosses 14" and larger are rated for 100 psi. Higher pressure ratings are available.

NO RETURNS ALLOWED