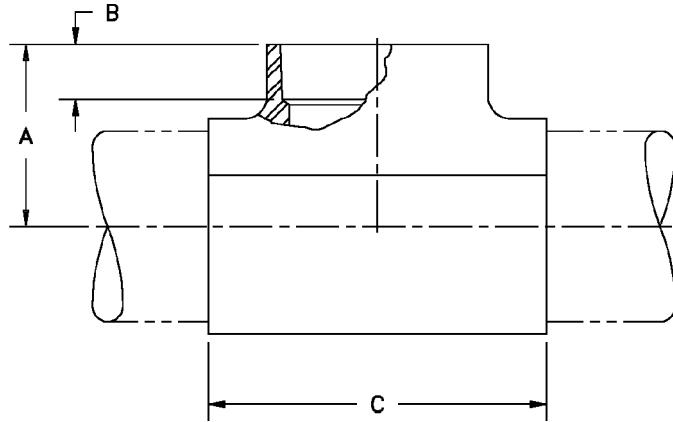




FIG. #66-B - Full Sized Saddle with Bell Outlet, 90 Degree

Size	"A"	"B"	"C"	Wt.
1	2.25	1.06	7.75	1.0
1-1/2	2.50	1.25	8.25	1.5
2	2.75	1.81	8.75	2.0
2-1/2	3.00	1.81	9.25	2.8
3	3.25	1.81	10.00	3.5
4	3.75	1.81	11.00	6.0
6	4.75	2.25	13.25	10.0
8	5.75	2.50	15.25	17.0
10	6.75	2.75	17.25	27.0
12	7.75	3.00	19.38	44.0



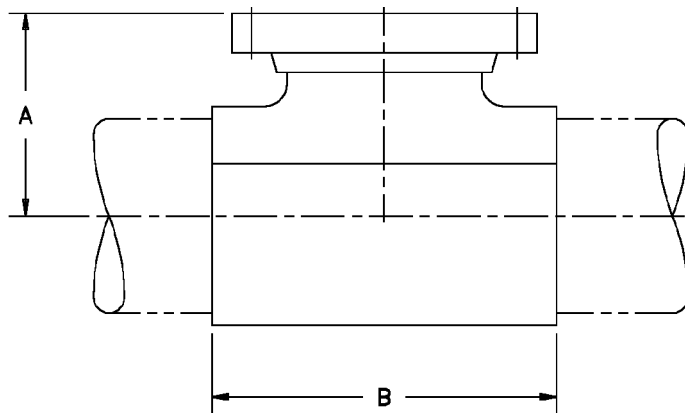
Also available with threaded or plain end.

Full size saddles allow the installation of an outlet equal to the diameter of the main run of the pipe.

NO RETURNS ALLOWED

FIG. #66-F - Full Sized Saddle with Flanged Outlet, 90 Degree

Size	"A"	"B"	Wt.
1	3.50	7.75	1.5
1-1/2	4.00	8.25	2.1
2	4.50	8.75	3.5
2-1/2	5.00	9.25	5.1
3	5.50	10.00	6.5
4	6.50	11.00	10.5
6	8.00	13.25	16.0
8	9.00	15.25	29.0
10	11.00	17.25	42.0
12	12.00	19.38	65.0



Bolt and gasket sets are available, please see Fig. #101. Full size saddles allow the installation of an outlet equal to the diameter of the main run of pipe.