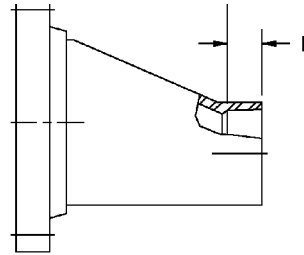
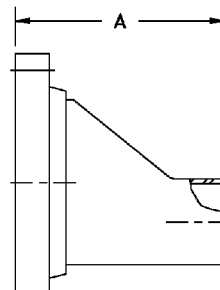


**FIG. #58 - Eccentric Tapered Body Reducer, Combination Coupled**

Size	"A"	"B"	Wt.
<b>Flange x Bell</b>			
1-1/2 x 1	4.5	1.06	1.0
2 x 1	5.0	1.06	2.1
2 x 1-1/2	5.0	1.37	2.5
2-1/2 x 1-1/2	5.5	1.37	3.7
2-1/2 x 2	5.5	1.81	3.7
3 x 1-1/2	6.0	1.37	4.4
3 x 2	6.0	1.81	4.2
3 x 2-1/2	6.0	1.81	4.6
4 x 2	7.0	1.81	6.5
4 x 2-1/2	7.0	1.81	6.5
4 x 3	7.0	1.81	6.5
6 x 3	9.0	1.81	12.3
6 x 4	9.0	1.81	12.4
6 x 5	9.0	1.81	12.4
8 x 4	11.0	1.81	18.0
8 x 5	11.0	1.81	18.0
8 x 6	11.0	2.25	18.0
10 x 6	12.0	2.25	24.0
10 x 8	12.0	2.50	24.0
12 x 8	14.0	2.50	33.0
12 x 10	14.0	2.75	33.0
14 x 10	16.0	2.75	48.0
14 x 12	16.0	3.00	48.0
16 x 12	18.0	3.00	62.0



Flange x Bell



Size	"A"	Wt.
<b>Flange x Plain End</b>		
1-1/2 x 1	4.38	1.0
2 x 1	4.38	2.1
2 x 1-1/2	4.88	2.5
2-1/2 x 1-1/2	5.38	3.7
2-1/2 x 2	5.88	3.7
3 x 1-1/2	5.88	4.4
3 x 2	5.88	4.2
3 x 2-1/2	5.88	4.6
4 x 2	6.88	6.5
4 x 2-1/2	6.88	6.5
4 x 3	6.88	6.5
6 x 3	8.88	12.3

Size	"A"	Wt.
<b>Flange x Plain End</b>		
6 x 4	8.88	12.4
6 x 5	8.88	12.9
8 x 4	10.88	18.0
8 x 5	10.88	18.0
8 x 6	10.88	18.0
10 x 6	11.88	24.0
10 x 8	11.88	24.0
12 x 8	13.88	33.0
12 x 10	13.88	33.0
14 x 10	15.88	48.0
14 x 12	15.88	48.0
16 x 12	17.88	62.0

Size	"A"	Wt.
<b>Flange x Plain End</b>		
16 x 14	17.75	62.0
18 x 14	18.75	72.0
18 x 16	18.75	72.0
20 x 16	19.75	100.0
20 x 18	19.75	100.0
24 x 18	23.75	140.0
24 x 20	23.75	140.0

Other sizes and combinations are available. Plain end reducers are available with socket ends for adhesive joining. Please see Fig. #90 for butt and wrap kits for plain end reducers. Bolt and gasket sets are available. Please see Fig. #101.

NO RETURNS ALLOWED