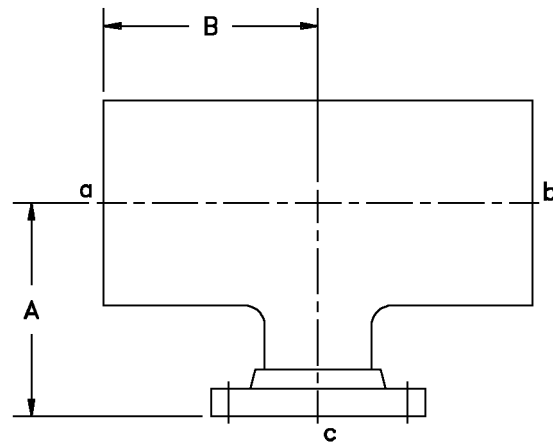
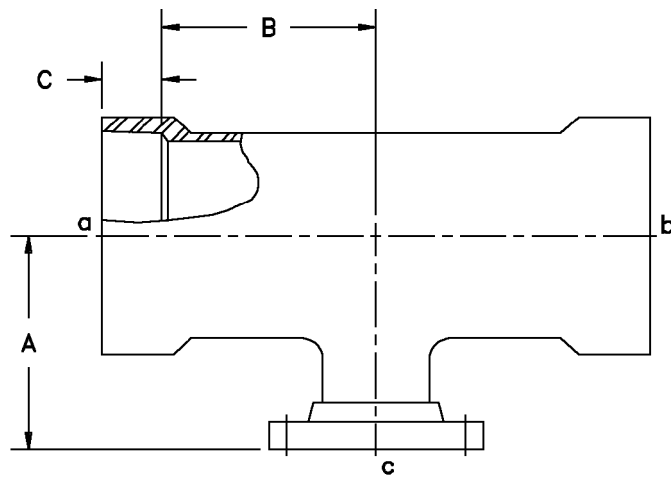




FIG. #49 - Reducing Tee, Combination Coupled

Size	"A"	"B"	"C"	Wt.
Bell x Bell x Flange				
1-1/2 x 1	4.00	2.37	1.25	1.5
2 x 1	4.50	2.62	1.81	2.0
2 x 1-1/2	4.50	2.62	1.81	2.1
2-1/2 x 1-1/2	5.00	3.12	1.81	3.8
2-1/2 x 2	5.00	3.12	1.81	3.9
3 x 2	5.50	3.37	1.81	4.5
3 x 2-1/2	5.50	3.37	1.81	4.6
4 x 2	6.50	4.12	1.81	6.3
4 x 2-1/2	6.50	4.12	1.81	6.5
4 x 3	6.50	4.12	1.81	6.9
6 x 3	8.00	5.62	2.25	15.0
6 x 4	8.00	5.62	2.25	15.3
8 x 4	9.00	9.00	2.50	21.0
8 x 6	9.00	9.00	2.50	23.0
10 x 6	11.00	11.00	2.75	32.0
10 x 8	11.00	11.00	2.75	37.0
12 x 8	12.00	12.00	3.00	54.0
12 x 10	12.00	12.00	3.00	59.0
Plain End x Plain End x Flange				
14 x 10	14.00	13.75	-	57.0
14 x 12	14.00	13.75	-	63.0
16 x 12	15.00	14.75	-	69.0
16 x 14	15.00	14.75	-	75.0
18 x 14	16.50	16.25	-	87.0
18 x 16	16.50	16.25	-	94.0
20 x 16	18.00	17.75	-	105.0
20 x 18	18.00	17.75	-	115.0
24 x 18	22.00	21.75	-	130.0
24 x 20	22.00	21.75	-	150.0



Tees 1/2" through 12" are rated for 150 psi. Tees 14" and larger are rated for 100 psi. Higher pressure ratings are available. Size reductions other than shown are available. Tees 14" and larger are available with bell ends for socket adhesive joining. Please see Fig. #90 for butt-and-wrap kits for plain end tees. Bolt and gaskets sets are available. Please see Fig. #101.

NO RETURNS ALLOWED