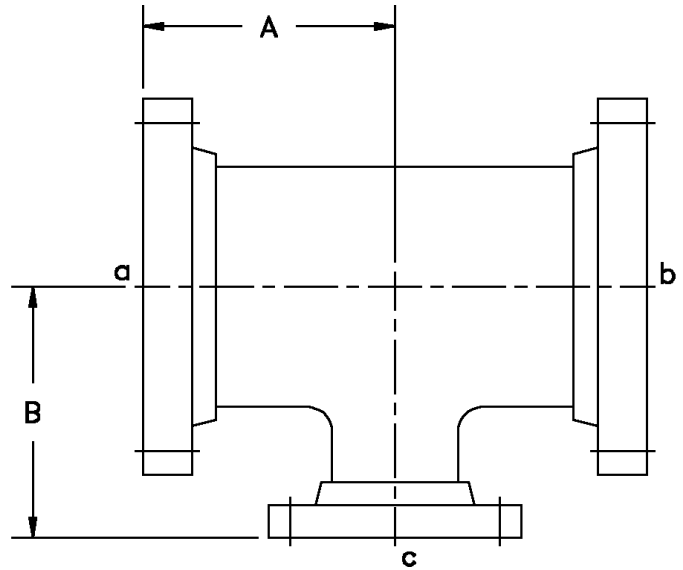




FIG. #48 - Reducing Tee, ANSI Flanged

Size	"A"	"B"	Wt.
1-1/2 x 1	4.0	4.0	5.5
2 x 1	4.5	4.5	7.0
2 x 1-1/2	4.5	4.5	7.5
2-1/2 x 1-1/2	5.0	5.0	8.0
2-1/2 x 2	5.0	5.0	8.5
3 x 2	5.5	5.5	11.5
3 x 2-1/2	5.5	5.5	12.2
4 x 2	6.5	6.5	18.0
4 x 2-1/2	6.5	6.5	18.8
4 x 3	6.5	6.5	19.0
6 x 3	8.0	8.0	25.0
6 x 4	8.0	8.0	26.0
8 x 4	9.0	9.0	43.0
8 x 6	9.0	9.0	47.0
10 x 6	11.0	11.0	61.0
10 x 8	11.0	11.0	66.5
12 x 8	12.0	12.0	100.0
12 x 10	12.0	12.0	105.0
14 x 10	14.0	14.0	115.0
14 x 12	14.0	14.0	123.0
16 x 12	15.0	15.0	151.0
16 x 14	15.0	15.0	159.0
18 x 14	16.5	16.5	179.0
18 x 16	16.5	16.5	190.0
20 x 16	18.0	18.0	250.0
20 x 18	18.0	18.0	255.0
24 x 18	22.0	22.0	330.0
24 x 20	22.0	22.0	355.0



Tees 1/2" through 12" are rated for 150 psi. Tees 14" and larger are rated for 100 psi. Higher pressure ratings are available. Size reductions other than shown are available. Fittings meet the center-to-flange-face dimension of ANSI B16.5, 150 lb. Bolt and gasket sets are available. Please see Fig. #101.

NO RETURNS ALLOWED