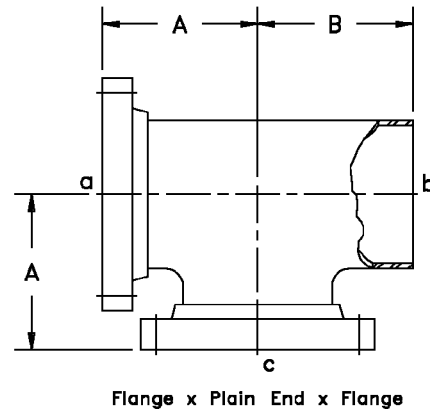
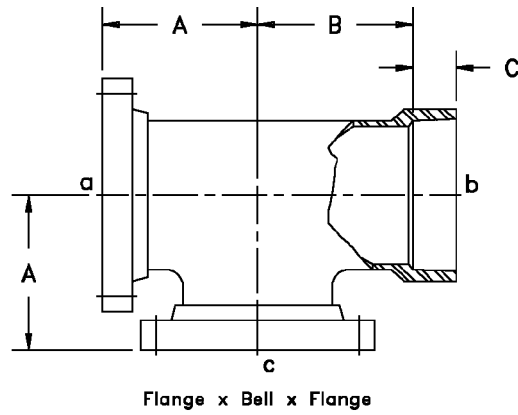




FIG. #45 - Tee, ANSI Flange x Combination Coupled

Size	"A"	"B"	"C"	Wt.
Flange x Bell x Flange				
1/2	2.50	1.25	0.875	1.6
3/4	2.50	1.25	1.00	2.0
1	3.50	1.62	1.06	3.0
1-1/2	4.00	2.37	1.25	4.5
2	4.50	2.62	1.81	6.0
2-1/2	5.00	3.12	1.81	8.3
3	5.50	3.62	1.81	9.5
4	6.50	4.12	1.81	14.0
6	8.00	5.62	2.25	22.0
8	9.00	9.00	2.50	38.0
10	11.00	11.00	2.75	55.0
12	12.00	12.00	3.00	76.0
14	14.00	14.00	3.00	100.0
16	15.00	15.00	3.50	130.0
Flange x Plain End x Flange				
14	14.00	13.75	-	100.0
16	15.00	14.75	-	130.0
18	16.50	16.25	-	150.0
20	18.00	17.75	-	210.0
24	22.00	21.75	-	285.0



Fittings meet the centerline-to-flange-face dimension of ANSI B16.5, 150 lb. Tees 1/2" through 12" are rated for 150 psi. Tees 14" and larger are rated for 100 psi. Higher pressure ratings are available. Plain ends are designed for butt-and-wrap joining. Please see Fig. #90 for butt-and-wrap kits. Bolt and gasket sets are available. Please see Fig. #101.

NO RETURNS ALLOWED