

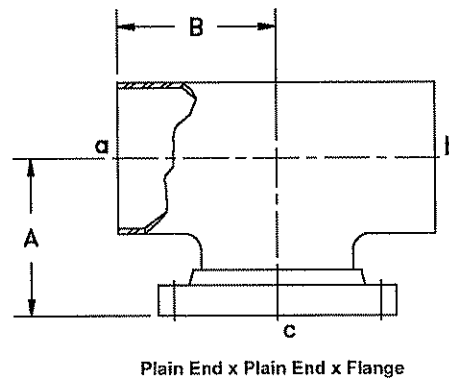
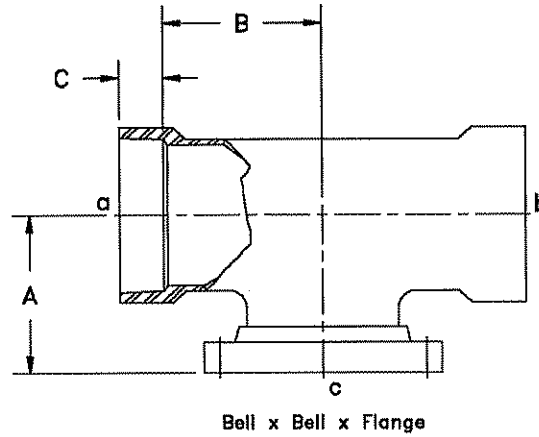


**Industrial Fiberglass Specialties, Inc.**  
 521 Kiser Street, Dayton, OH 45404-1641  
 Phone: (937) 222-9000 • Fax: (937) 222-9020  
 Email: sales@ifs-frp.com • Web: www.ifs-frp.com

**Product Catalog**  
 24 February 2004

**FIG. #43 - Tee, Combination Coupled x ANSI Flanged Branch**

Size	"A"	"B"	"C"	Wt.
<b>Bell x Bell x Flange</b>				
1/2	2.50	1.25	0.875	1.1
3/4	2.50	1.25	1.00	1.4
1	3.50	1.62	1.06	2.0
1-1/2	4.00	2.37	1.25	3.0
2	4.50	2.62	1.81	4.0
2-1/2	5.00	3.12	1.81	5.5
3	5.50	3.62	1.81	6.5
4	6.50	4.12	1.81	10.0
6	8.00	5.62	2.25	16.0
8	9.00	9.00	2.50	28.0
10	11.00	11.00	2.75	41.0
12	12.00	12.00	3.00	65.0
14	14.00	14.00	3.00	71.0
16	15.00	15.00	3.00	90.0
<b>Plain End x Plain End x Flange</b>				
14	14.00	13.75	-	-
16	15.00	14.75	-	-
18	16.50	16.25	-	-
20	18.00	17.75	-	-
24	22.00	21.75	-	-



Fittings meet the centerline-to-flange-face dimension of ANSI B16.5, 150 lb. Tees 1/2" through 12" are rated for 150 psi. Tees 14" and larger are rated for 100 psi. Higher pressure ratings are available. Plain ends are designed for butt-and-wrap joining. Please see Fig. #90 for butt-and-wrap kits. Bolt and gasket sets are available. Please see Fig. #101.

NO RETURNS ALLOWED