



**Industrial Fiberglass Specialties, Inc.**

521 Kiser Street, Dayton, OH 45404-1641

Phone: (937) 222-9000 • Fax: (937) 222-9020

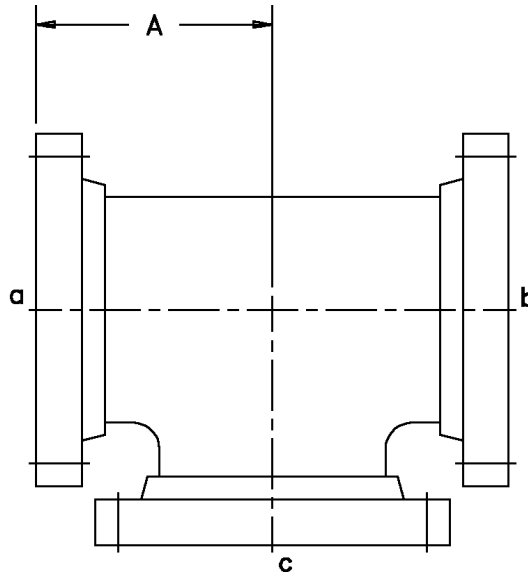
Email: sales@ifs-frp.com • Web: www.ifs-frp.com

**Product Catalog**

**24 February 2004**

**FIG. #42 - Tee, ANSI 150 lb. Flanged**

Size	"A"	Wt.
1/2	2.50	1.8
3/4	2.50	2.5
1	3.50	4.0
1-1/2	4.00	6.0
2	4.50	8.0
2-1/2	5.00	9.2
3	5.50	12.5
4	6.50	20.0
6	8.00	28.0
8	9.00	49.0
10	11.00	69.0
12	12.00	110.0
14	14.00	130.0
16	15.00	170.0
18	16.50	195.0
20	18.00	280.0
24	22.00	385.0



Fittings meet the centerline-to-flange-face dimension of ANSI B16.5, 150 lb. Tees 1/2" through 12" are rated for 150 psi. Tees 14" and larger are rated for 100 psi. Higher pressure ratings are available. Bolt and gasket sets are available. Please see Fig. #101.