



**Industrial Fiberglass Specialties, Inc.**

521 Kiser Street, Dayton, OH 45404-1641

Phone: (937) 222-9000 • Fax: (937) 222-9020

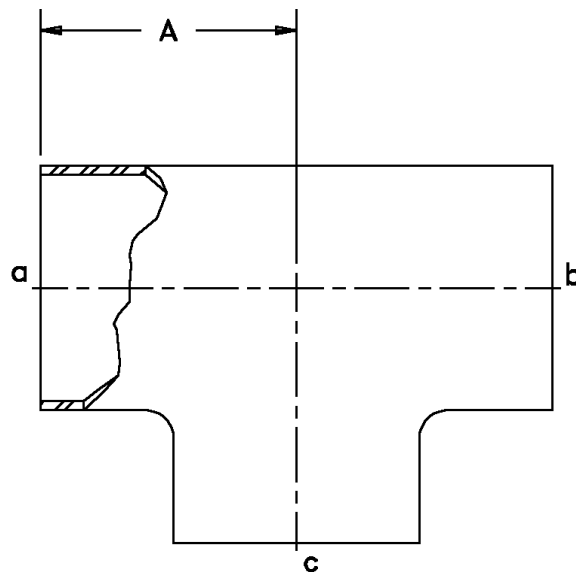
Email: sales@ifs-frp.com • Web: www.ifs-frp.com

**Product Catalog**

**24 February 2004**

**FIG. #41 - Tee, Plain End**

Size	"A"	Wt.
1/2	2.38	.04
3/4	2.38	.06
1	3.38	1.0
1-1/2	3.87	1.5
2	4.37	2.0
2-1/2	4.37	2.8
3	5.37	3.5
4	6.37	6.0
6	7.87	10.0
8	8.87	17.0
10	10.87	27.0
12	11.87	44.0
14	13.75	42.0
16	14.75	50.0
18	16.25	59.0
20	17.75	70.0
24	21.75	85.0
30	30.00	280.0
36	33.00	420.0



Plain end are designed for butt and wrap joining. Butt and wrap kits are available. Please see Fig. #90. Tees 1/2" through 12" are rated for 150 psi. Tees 14" and larger are rated for 100 psi. Higher pressure ratings are available.

**NO RETURNS ALLOWED**