



Industrial Fiberglass Specialties, Inc.

521 Kiser Street, Dayton, OH 45404-1641

Phone: (937) 222-9000 • Fax: (937) 222-9020

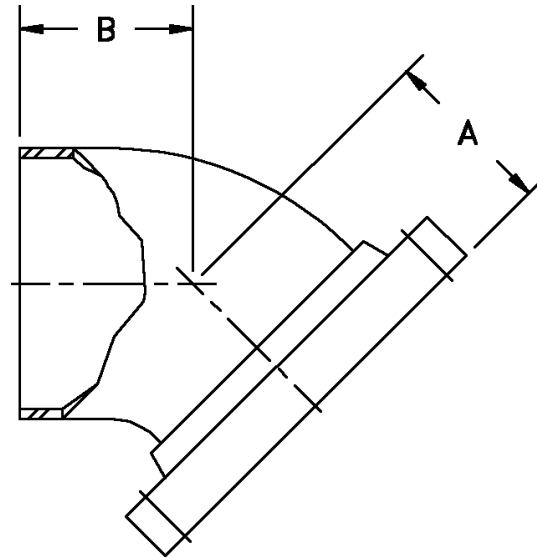
Email: sales@ifs-frp.com • Web: www.ifs-frp.com

Product Catalog

24 February 2004

FIG. #34 - 45 Degree Elbow, ANSI 150 lb. Flange x Plain End

Size	"A"	"B"	Wt.
3/4	1.50	1.37	1.0
1	1.75	1.63	1.5
1-1/2	2.25	2.13	2.4
2	2.50	2.37	3.5
2-1/2	3.00	2.87	5.0
3	3.00	2.87	6.0
4	4.00	3.87	8.5
5	C.F.	C.F.	C.F.
6	5.00	4.87	15.5
8	5.50	5.37	23.0
10	6.50	6.37	35.0
12	7.50	7.37	60.0
14	7.50	7.25	63.0
16	8.00	7.75	70.0
18	8.50	8.25	85.0
20	9.50	9.25	110.0
24	11.00	10.75	190.0



C.F. - Consult factory for dimensions.

Elbows 1" through 12" are rated for 150 psi. Elbows 14" and larger are rated for 100 psi. Higher pressure ratings are available. Plain-end is designed for butt-and-wrap joining. Please see Fig. #90 for butt-and-wrap kits. Fittings meet the centerline-to-flange-face dimension of ANSI B16.5, 150 lb. 14" to 24" ANSI elbows are mitered and overwound. Bolt and Gasket sets are available. Please see Fig. #90.

NO RETURNS ALLOWED