



ADAPTERS

FIG. #3 - Adapter, Bell x Female NPT Thread

Size	"A"	"B"	Wt.
1/2	2.00	.87	.1
3/4	2.12	1.00	.1
1	2.31	1.06	.2
1-1/2	2.62	1.37	.4
2	3.25	1.81	.6
2-1/2	3.81	1.81	.9
3	3.81	1.81	1.2
4	3.93	1.81	1.6
6	4.50	2.25	2.6
8	5.00	2.50	3.8

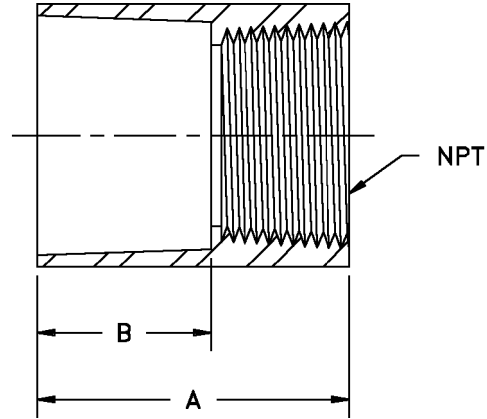


FIG. #4 - Adapter, Bell x Male NPT Thread

Size	"A"	"B"	Wt.
3/8	1.81	.75	.1
1/2	2.10	.88	.1
3/4	2.10	1.00	.1
1	2.50	1.06	.3
1-1/4	2.56	1.19	.3
1-1/2	2.62	1.37	.4
2	3.25	1.81	.6
2-1/2	3.50	1.81	.9
3	3.62	1.81	1.2
4	3.75	1.81	1.6
6	4.62	2.25	2.6
8	5.75	2.50	3.8
10	5.81	2.75	4.4

