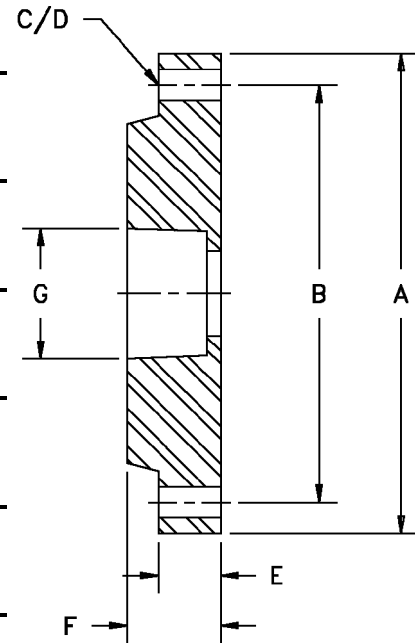


Industrial Fiberglass Specialties, Inc.
 521 Kiser Street, Dayton, OH 45404-1641
 Phone: (937) 222-9000 • Fax: (937) 222-9020
 Email: sales@ifs-frp.com • Web: www.ifs-frp.com

Product Catalog
 24 February 2004

FIG. #18 - 150 lb. Reducing Socket Flange, Filament Wound

Size	"A" Fig. O.D.	"B" Bolt Circle	"C" Number Holes	"D" Dia. Holes	"E"	"F"	"G" Nom. Socket Dia.
1	4.25	3.12	4	5/8	.75	1.18	1/2 thru 3/4
1-1/2	5.00	3.87	4	5/8	.81	1.37	1/2 thru 1-1/4
2	6.00	4.75	4	3/4	.81	1.48	1/2 thru 1-1/2
2-1/2	7.00	5.50	4	3/4	1.00	1.50	1/2 thru 2
3	7.50	6.00	4	3/4	1.12	1.65	1/2 thru 2-1/2
4	9.00	7.50	8	3/4	1.18	2.00	1/2 thru 3
5	10.00	8.50	8	7/8	1.37	2.00	1/2 thru 4
6	11.00	9.50	8	7/8	1.56	2.37	1/2 thru 5
8	13.50	11.75	8	7/8	1.75	2.62	1/2 thru 6
10	16.00	14.25	12	1	2.12	3.00	1/2 thru 8
12	19.00	17.00	12	1	2.25	3.25	1/2 thru 10
14	21.00	18.75	12	1-1/8	2.37	3.25	1/2 thru 12
16	23.50	21.25	16	1-1/8	2.75	3.75	1/2 thru 14
18	25.00	22.75	16	1-1/4	3.00	4.00	1/2 thru 16
20	27.50	25.00	20	1-1/4	4.00	5.00	1/2 thru 18
24	32.00	29.50	20	1-3/8	4.25	5.00	1/2 thru 20
30	38.75	36.00	28	1-3/8	3.25	4.37	1/2 thru 24
36	46.00	42.75	32	1-3/8	3.62	4.62	1/2 thru 30



Flanges drilled to ANSI B16.5, 150 lb. Please refer to Appendix B for Flange Assembly Instructions. Bolt and gasket sets are available. Please see Fig. #101.

NO RETURNS ALLOWED