



**FiberSystems**

521 Kiser Street, Dayton, OH 45404-1641

Phone: (937) 222-9000 • Fax: (937) 222-9020

Email: sales@ifs-frp.com • Web: www.ifs-frp.com

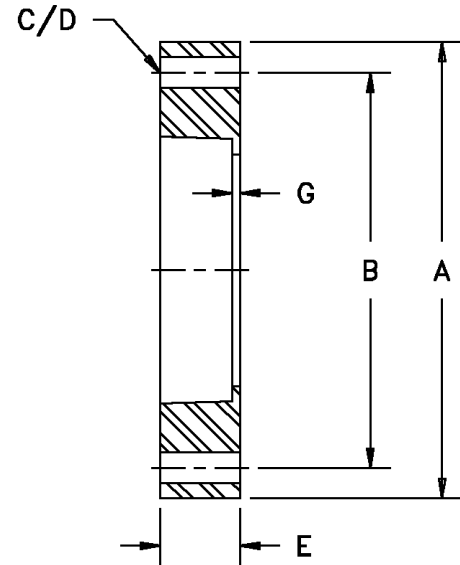
**Product Catalog**

24 February 2004

**FLANGES**

**FIG. #14 - 300 lb. Socket Flange, Filament Wound**

Size	"A" Fig. O.D.	"B" Bolt Circle	"C" Number Holes	"D" Dia. Holes	"E" Fig. Thk.	"G"	Wt.
1/2	3.75	2.62	4	5/8	1.00	.12	.4
3/4	4.62	3.25	4	3/4	1.00	.12	.7
1	4.87	3.50	4	3/4	1.18	.12	.9
1-1/2	6.12	4.50	4	7/8	1.37	.12	1.1
2	6.50	5.00	8	3/4	1.94	.12	2.2
2-1/2	7.50	5.87	8	7/8	1.94	.12	3.3
3	8.25	6.62	8	7/8	2.00	.12	4.5
4	10.00	7.87	8	7/8	1.93	.12	6.8
5	11.00	9.25	8	7/8	2.37	.12	8.3
6	12.50	10.62	12	7/8	2.37	.12	9.0
8	15.00	13.00	12	1	2.62	.12	16.0
10	17.50	15.25	16	1-1/8	3.00	.25	20.0
12	20.50	17.75	16	1-1/4	3.25	.25	28.0
14	23.00	20.25	20	1-1/4	3.25	.25	33.0
16	25.50	22.50	20	1-3/8	3.75	.25	39.0



Flange drilled to ANSI B16.5 300 lb. Higher pressure ratings available. Please refer to Appendix B for Flange Assembly Instructions. Bolt and gasket sets are available, please see Fig. #101.